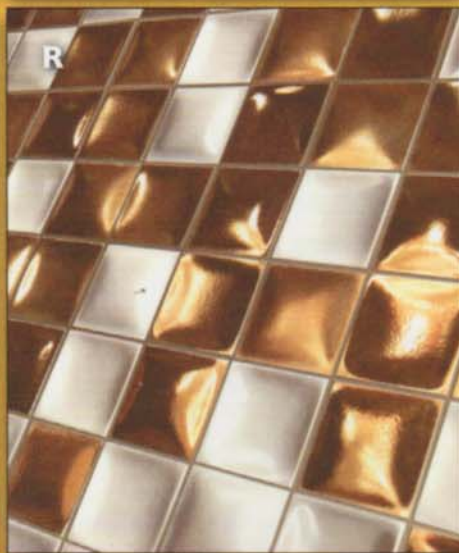
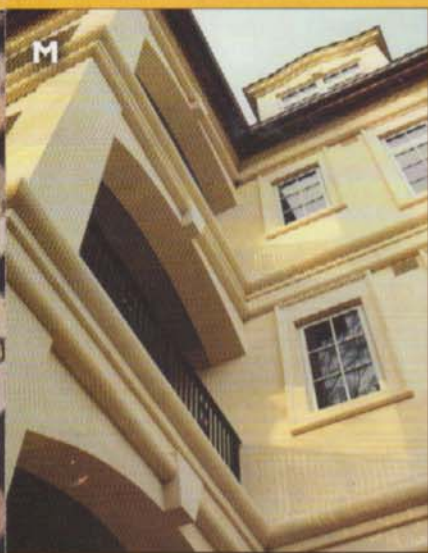


Fall 2009 Volume 15 No. 4

CONTEMPORARY
STONE & TILE
design
www.cstdmag.com A **bnp** PUBLICATION



RESIDENTIAL DESIGN / MOSAICS / FRANK GEHRY IN SPAIN



laminated piece without any joints. The standard sizes are from 2 x 2 to 12 x 12 inches, and customized sizes are also available. The popular applications include inserts, décor piece, mirror surrounds, borders and decorated wall tiles. According to Bestview, Mother of Pearl has always been rare and popular in jewelry — its subtle, but colorful, iridescent glow makes it the most exotic material in any luxury decorations.

www.bestviewinternational.com

M. Pimar Gold Italian limestone (pictured) from **Pimar Srl** is a beautiful Italian limestone supplied through the company's own quarries. Other colors include Beige, Grey, White and Coral Stone with different finishes, dimensions, customized service and, if requested, original architectural design made to customer specifications.

www.pietraleccese.com

N. The Ghana collection by **Grespania**, a Tile of Spain-branded manufacturer, is characterized by design reminiscent of an elephant's wrinkled skin. Tiles are offered in shades of natural grays, blacks and browns as well as 18- x 18- and 24- x 24-inch formats.

www.grespania.com

O. Le Murrine Gold by **Settecento** was designed to bring fun and spontaneity to young glamorous environments. The mosaic-like layout of the tiles renders an image of wealth and luxury. The bright modern colors and the way these interact with the more classic, darker shades evoke a certain artistic and innovative quality, according to the manufacturer. The collection is available in five colors, including: Amber, Gold, Blue, Amethyst and Agata, and three sizes: 12 x 12, 2 x 12 and 20 x 20 inches.

www.settecento.com

P. Palace Stone, a porcelain stoneware collection by **Versace Home**, is adaptable to all kinds of design styles. And while it is porcelain, all its variations equally reproduce the look of elegance and stability generally associated with stone, according to the manufacturer. For those in search of a more refined look, the collection presents itself in a series of polished tiles that play on the contrast of black and white. For those who wish to achieve a more ethnic, earthy look, the line offers a series of rough-hewn tiles in Beige, Gold and Almond. A series of borders, mosaics and medallions that recall all ancient, rural and sophisticated settings is also available. Available sizes include: 16 x 16 and 8 x 16 inches for field tiles. Trim pieces and decorative accents vary in size.

www.versacehome.com

Q. Hall, a porcelain stoneware collection from **Imola**, uses light and its reflexive properties to add another dimension to its tiles. The surface of the tiles are polished with an undulating texture rendering a spectrum-like effect that transforms any space into a lively, colorful environment, reports the manufacturer. The collection is available in 12- x 12- and 12- x 24-inch formats as well as shades of white, beige, yellow, orange, red, blue, dark blue, black and brown.

www.imolaceramica.it

R. Joe by **Tagina Ceramiche d'arte** is a soft and welcoming collection that features concave and convex shapes. The double-fired white body finely glazed tiles are adorned by a "blur" finish. Colors include: JoeBlack, JoeWhite, JoePink, JoeSky, JoeRed, JoeBronze, JoeGreen and JoeOlive.

www.tagina.it